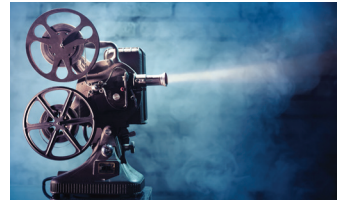


Due to Covid-19, please contact the club directors or call the Oak View Center, 708-857-2200 to ensure clubs have resumed meetings.

Community Clubs at Oak View Center

All are welcome to join and participate!



Beverly Hills Embroiderers' Club (All ages)
Annual dues are \$25

The group was formed to develop and share knowledge for improving members' stitching skills. The meetings offer varied programs: instructions by nationally known teachers and members, historical lectures and hands-on workbasket. An exhibition of members' needlework is presented in October, every even-numbered calendar year. Please attend a meeting at no Charge or Obligation if you are interested. The Club meets the 3rd Tues. of each month at 9:00A-12:00P or attend the evening session from 7:00-9:00P. The meetings run from September thru April. (tm)

Oak Lawn Duplicate Bridge (All Ages)

Meets on Mondays in Room 13/14 from 11:00A-3:00P. Any new players meet at 10:45am we will have a brief lesson. **NEW players will also get a FREE 2nd play if they bring a partner.** Coffee & snacks are included. Contact Director: Denny O'Dowd at (708-528-2051) (tm)

Oak Lawn Camera Club (Age: 18 & up)

Attention shutterbugs! Get involved with this club. Club will consist of various lectures. Members will have a chance to compete through different clubs and show their picture talents at a nominal cost. The Club meets on the 1st & 2nd Friday of each month from 7:00-10:00P (Sept. thru May). Contact: Betty Nehis (708-534-1912) (tm)

Oak Lawn Chess Club (Age: 16 & up)

Annual Fee \$15. If you interested in joining a chess club, just show up on Fridays. The Club meets on every Friday from 6:30-10:30P. Chess sets will be provided. Email Wayne, southsuburbanchessclub@gmail.com. (tm)

CineVerse (Age: 17 & up)

CineVerse is a weekly film discussion group that explores the universe of cinema. We meet in the theater or the room announced on building signage. At every meeting, we view and discuss a different movie, chosen by our members on a rotating basis. CineVerse is open to anyone 17 years and older. To join our group or for more info, e-mail cineversegroup@gmail.com, visit cineversegroup.blogspot.com, or call 708-529-9028. PDNA (ms)

Location: Oak View Center

Instructor: Eric Martin

Day	Time
W	7:00-10:00P

The Oak Lawn Park District is not affiliated with these clubs in any manner, nor does it endorse or assume any responsibility for any activities which may occur in connection with them.

Greater Oak Lawn Senior's Club (Seniors)
The annual dues are \$5.

This is a club to play pinochle. The Club meets every Friday from 11:00A-3:00P. Refreshments are served at 12:30P for just \$1.50. (tm)

Hickory Hills Woodworkers Club (Age: 18 & up)
The annual dues are \$50.

This club promotes exchange of ideas and education in the art of woodworking. Everyone welcome!!! The Club meets the 2nd Thursday of each month from 7:00-9:00P. (tm)

Oak Lawn Garden Club (Age: 18 & up)
The annual dues are \$15.

In this club, we exchange plants, ideas and information to stimulate the knowledge and love of gardening. The Club meets the 4th Thursday of each month from 9:30A-12:00P. Please join us! (tm)

Oak Lawn Table Tennis (All ages)

The fee is \$1 per visit – purchase the punch card at Oak View. Join us each week for table-tennis action. Play is ongoing throughout the year. The Club meets each Tuesday and Thursday from 8:00-10:00P. The Club also meets on Thursday from 11:15-1:15P. Bring your paddles and join us for fun!! No senior discount. (tm)

Weekly schedule (unless noted)

Monday

- Bridge - 11:00A - 3:00P

Tuesday

- Embroidery Club - 9:00A-12:00P & 7:00-9:00P (3rd Tuesday of the Month)(Sept.-April)
- Table Tennis - 8:00-10:00P

Wednesday

- Cineverse - 7:00-10:00P

Thursday

- Oak Lawn Garden Club - 9:30A-12:00P (4th Thursday of the Month)
- Table Tennis - 11:15A - 1:15P
- Hickory Hills Woodworker's Club 7:00 - 9:00P (2nd Thursday of the Month)
- Table Tennis - 8:00 - 10:00P

Friday

- Oak Lawn Senior's Club - 11:00A - 3:00P
- Chess Club 6:30-10:30P
- Camera Club 7:00-10:00P (1st & 2nd Fri. of the Month)(Sept.-May)